

EXHIBIT CALENDAR

**112th Annual Exhibition:
Allied Artists of America**
September 13, 2025—January 11, 2026

**The Pigeon Comes to Reading:
The Mo Willems Exhibit**
September 20, 2025—January 4, 2026

Dressing the Abbey
September 27, 2025—January 18, 2026

**Towers of Tomorrow with LEGO® Bricks
and Art of the Airport Tower**
January 31—May 17, 2026

**Re-Discovering Native America: Stories
in Motion with The Red Road Project**
February 7—May 3, 2026

Family programming in RED
Adult programming in BLUE
Scout and Camp programming in GREEN
* = Requires registration/tickets

For more information and topics/themes,
visit our website or call the Education
Department at 610-371-5850 x255.

SEPTEMBER

Homeschool Days*
• September 25 | 10am-12pm

Senior Series
• September 26 | 1-2pm

Night at The Museum*
• September 27 | 6-9pm

Meet The Museum Night for Educators
• September 30 | 3-6pm

Yoga Under the Stars*
• September 30 | 5:30-6:30pm

OCTOBER

Yoga Under the Stars*
• October 7, 14, 21, and 28 | 5:30-6:30pm

Homeschool Days*
• October 9 and 23 | 10am-12pm

Museum Open Late – Evening Hours
• October 13 | 5-8pm

Museum After Dark: Spooky Hours
• October 16 | 6-10pm

Sensory Inclusive Hours*
• October 19 | 10-11am
• October 20 | 5-6pm

Arboretum Education
• October 21 | 10-11am

Art History Short Course*
• October 21 and 28 | 1:30-3pm



Address Service Requested

NON-PROFIT
ORG.
U.S. Postage
PAID
READING, PA
PERMIT NO. 598

Dinner Series*
• October 23 | 5:30-9pm

Senior Series
• October 24 | 1-2pm

Trick or Treat at The Museum
• October 25 | 9-11am

Rocky Horror Picture Show*
• October 31 | 5,7, and 9pm

NOVEMBER

Yuletide Market
• November 2 | 10am-3pm
Rain Date • November 9 | 10am-3pm

Art History Short Course*
• November 4 and 11 | 1:30-3pm

Yoga Under the Stars*
• November 4 | 5:30-6:30pm

**RPM Fundraiser at Austin's
Restaurant & Bar and Coastal Grille**
• November 6 | 11am-8:30pm

Homeschool Days*
• November 6 and 20 | 10am-12pm

**Girl Scouts of Eastern
Pennsylvania – Quest Day –
GSEP: Craft and Tinker Through time***
• November 8 | 9am-12pm

Celebrate our Community Day
• November 9 | 1-4pm

Amá Documentary Screening*
• November 10 | 2pm

Purchase Party*
• November 13 | 5:30-8pm

**Cacoosing Cub Scouts –
Quest Day***
• November 15 | 9am-4pm

**Yuletide Around the World
Holiday Display Begins**
• November 16

Arboretum Education
• November 18 | 10-11am

Senior Series
• November 21 | 1-2pm

**Girl Scouts (All Councils) – Quest Day –
GSUSA: Don't Let the Scout Illustrate!***
• November 22 | 9am-12pm

STEM Sunday*
• November 23 | 1-4pm

Sensory Inclusive Hours*
• November 24 | 5-6pm
• November 28 | 10-11am

DECEMBER

Yoga Under the Stars*
• December 2, 9, 16, 23, and 30 |
5:30-6:30pm

Homeschool Days*
• December 4 and 18 | 10am-12pm

Pictures with Santa*
• December 6 | 9am-1pm

Sensory Inclusive Hours*
• December 7 | 10-11am
• December 8 | 5-6pm
• December 30 | 10-11am

**Girl Scouts (All Councils) –
Quest Day – GSUSA: Juliette's Way:
An Etiquette Adventure***
• December 14 | 9am-12pm

Arboretum Education
• December 16 | 10-11am

**Museum After Dark:
Holiday Cheer Night Out**
• December 18 | 6-10pm

Senior Series
• December 19 | 1-2pm

Noon Year's Eve*
• December 31 | 9am-12pm

New Year's Eve Under the Stars
• December 31 | TBD

For details on events and updates to the calendar, visit: readingpublicmuseum.org

MUSEUM ROAD

FALL 2025

A publication of The Reading Public Museum • Neag Planetarium • Arboretum



INSIDE THIS ISSUE:

- *Dressing the Abbey*
- *The Pigeon Comes to Reading*
- *Allied Artists of America*



DRESSING THE *Abbey*



September 27, 2025 –
January 18, 2026

Get ready to experience 36 original costumes worn by the characters of *Downton Abbey*™ which reflect popular fashions of Great Britain in the first few decades of the 20th century. The exhibition showcases the turbulence and change from the late Edwardian era to the 1920s through the fashions of the period while evoking fans' favorite moments from the show! The exhibition presents the award-winning costumes created for the hit British drama produced by the London Academy award-winning costumer, Cosprop Ltd.

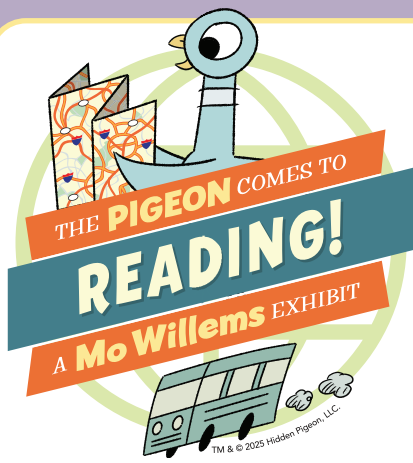
The stunning costumes were created for the television show's aristocratic Crawley family and their servants who inhabit the fictional English country estate of *Downton Abbey*. The 36 costumes range from country tweeds and riding outfits; servants' uniforms and butlers' livery; to lavish evening attire crafted from sumptuous fabrics and decorated with intricate embroidery, lace, and beading.

Fans of the television show and film franchise will be impressed by the array of costumes worn by Maggie Smith as Violet, Dowager Countess of Grantham, Elizabeth McGovern as Lady Cora, and Shirley McLaine as Martha Levinson. The "downstairs" staff costumes include ones worn by Jim Carter as Mr. Carson, Lesley Nicol as Mrs. Patmore, Sophie McShera as Daisy, and Joanne Froggatt as Anna.

Check RPM's website for exhibition-related programming and events, including Night at The Museum, Dinner Series, and more!

The exhibition is sponsored locally by The Marlin and Ginger Miller Exhibition Endowment.

*The exhibition is developed and distributed by Exhibits Development Group in cooperation with Cosprop Ltd., London, England. The exhibition is not endorsed by, sponsored by, licensed by, associated with, or otherwise affiliated with the television series *Downton Abbey*™, NBC Universal International, Carnival Film and Television Limited or their representatives.*



**September 20, 2025 –
January 4, 2026**

Co-organized by Children's Museum of Pittsburgh and The Eric Carle Museum of Picture Book Art, *The Pigeon Comes to Reading* is inspired by the art and characters of the beloved children's book author and illustrator, Mo Willems.

Many familiar characters will be featured, including the best friend duo Elephant Gerald and Piggie, faithful companion Knuffle Bunny, and The Pigeon, the wily city bird best known for his antics in *Don't Let the Pigeon Drive the Bus!*

Hands-on activities will give visitors the opportunity to make art that is inspired by Mo Willems and learn about the rich social and emotional lives of the author's characters. The exhibit will also feature prints of illustrations, including works in progress, by Mo Willems

In this play-and-learn exhibit, visitors can:

- Have a hilarious conversation in the voices of Elephant Gerald and Piggie at a double-sided phone booth
- Make Elephant Gerald and Piggie dance with old-time animation
- Spin the laundromat washing machine and uncover Knuffle Bunny and other surprises
- Dress up Naked Mole Rat and send him down the runway
- Stack lightweight blocks to create their own terrible monster or funny friend
- Launch foam hot dogs at The Pigeon and play the Plinko game to give the Duckling a cookie
- Learn to draw just like Mo Willems!

***The Pigeon Comes to Reading* is sponsored locally by Berks County Community Foundation and Wyomissing Foundation.**



Art © Mo Willems. ELEPHANT & PIGGIE is a trademark of The Mo Willems Studio, Inc



Susan Brand (American), *It's Been a Long Winter*, 2025, acrylic on panel, 11 x 14 inches, Loan, © copyright of the artist

112th Annual Exhibition: Allied Artists of America **September 13, 2025 – January 11, 2026**

Experience outstanding submissions by contemporary artists from across the nation in the *112th Annual Exhibition of the Allied Artists of America*. Approximately 100 selected works will be included in this year's exhibition, hosted for the very first time at the Reading Public Museum. Founded in 1914 in New York City, Allied Artists of America is one of the oldest artists' organizations in the nation. This year, the Juror of Awards is Thomas Folk, Ph.D., scholar and art appraiser with expertise in Pennsylvania Impressionism. The Jury of Selection include Annie Patt, Gabriela Gonzalez Delloso, and Steve Scheuring.

This engaging art exhibition will occupy the American Gallery, the Irvin and Lois E. Cohen Modern and Contemporary Galley and the Works on Paper Gallery. The show will feature some of the best works by contemporary artists including examples in oil painting, sculpture, graphics, mix media, watercolor, and pastels. Curator Scott Schweigert noted that "the quality of works featured in annual exhibitions of Allied Artists is very high, and we expect a stellar show with impressive submissions and prize winners. We are so proud to host a group with such long standing tradition and artistic achievement."

Ditch the Boardroom— Host Your Next Corporate Training at the Reading Public Museum!

Why settle for another dull training day in a conference room when you could inspire your team in a venue that sparks creativity, curiosity, and collaboration?

The Reading Public Museum is not your average meeting space. It's a place where history, art, and innovation come together—creating the perfect backdrop for unforgettable corporate trainings, seminars, and professional retreats.

Choose from our dynamic rental spaces:

- **Ground Floor Auditorium** – Spacious, tech-ready, and great for keynote presentations or lively panel discussions.
- **Founders' Gallery (Second Floor)** – Sophisticated and surrounded by stunning art—perfect for brainstorming, networking, or breakout sessions.
- **Neag Planetarium** – Yes, a planetarium! Think outside the box (and into the galaxy) with this immersive space, ideal for creative workshops or a private star show.

All rentals include a 4-hour time block and come with all the essentials: tables, chairs, setup, staff assistance, A/V equipment, and free onsite parking. Need more time? Just ask—we've got you covered!

Break up the day with a little inspiration:

Let your team recharge with free-roam tours through The Museum galleries—or go big with a private star show in the Neag Planetarium for an out-of-this-world team experience.

Fuel your team the delicious way:

Our Preferred Caterers know their stuff. From morning coffee to full-service luncheons, they'll take care of everything so you can focus on what matters—connecting, learning, and leading.

Ready to make your next event one they'll actually look forward to? Contact Kara Seawell at 610.371.5850 x234 or kara.seawell@readingpublicmuseum.org to learn more and reserve your date.



Think bigger. Plan bolder. Host smarter—at The Reading Public Museum.

THE
13TH
ANNUAL

Night AT THE Museum

Presented by The
Stevens & Lee
Companies

*Join us for a night of philanthropy, fun,
and the unveiling of Dressing the Abbey*

READING PUBLIC MUSEUM
SATURDAY, SEPTEMBER 27 6-9PM

Members: \$100/person or \$175/couple
Non-Members: \$125/person or \$200/couple

Purchase tickets by scanning this code or visit
www.readingpublicmuseum.org/natm



Your best 1920s attire, suitable for a party at Downton with
the Crawleys, is encouraged but never required

One Visit Can Change a Student's Life: Help Feed Their Imagination!

At the Reading Public Museum, we know that curiosity is the spark that lights a lifelong passion for learning. For over 110 years, we've opened our doors to nurture that spark, inviting generations of children to step into a world of wonder. Imagine a child standing beneath the shimmering stars of the Neag Planetarium, eyes wide with awe. Picture them exploring ancient artifacts, vibrant art, and fascinating science exhibits on a guided tour. These moments don't just teach facts, they ignite dreams.

But, not every child in our community gets this chance.



Each year, our **Feed Their Imagination (FTI) program** breaks down barriers by providing vital funding for museum tours, planetarium experiences, and transportation to schools and community groups who otherwise couldn't afford to visit. These aren't just field trips; they're transformative journeys, doorways to discovery and inspiration that shape the future artists, scientists, and leaders of tomorrow.

Thanks to the generosity of donors like you, last year the FTI program gave 4,937 children from 22 school districts across 8 Pennsylvania counties the chance to experience this magic. However, the demand is growing every day: teachers are reaching out, students are hungry to

learn, and we want to say "yes" to every single one! **This is where your generosity can change lives!**

Your gift to Feed Their Imagination helps provide:

- **Museum admission for students and groups** who need financial assistance
- **Neag Planetarium experiences** that light up a lifelong love of science and astronomy
- **Bus transportation**, the greatest obstacle for many schools—a single bus can cost over \$700 for one field trip!

In times when school budgets are tight and opportunities scarce, your support can make the impossible possible. **YOU** can ensure that no child is held back by cost and that every young mind has the chance to be inspired. A gift of \$1,000 funds a Museum and Neag Planetarium visit for 100 eager students. \$700 brings a whole busload of children ready to learn and dream. Every donation, no matter the size, helps a child imagine bigger and reach higher. Together, we can inspire the next generation, one unforgettable visit at a time.

Donate today to the Feed Their Imagination program and help bring the magic of the Reading Public Museum to more children than ever before. Give now and be the spark that lights a lifelong love of learning.

To contribute or learn more, please contact Ashley Houston, Director of Development, at 610-371-5850 x228 or Ashley.Houston@readingpublicmuseum.org.

Watch your mail this autumn for more ways to join us in inspiring the next generation.



FALL 2025 EDUCATION CALENDAR

Homeschool Days | 10am-12pm

Join educators from The Museum for an exciting morning filled with special tours and hands-on projects that the whole family can enjoy! Programs are designed for elementary school age students (younger and older siblings welcome to participate).

Upcoming classes:

- September 25 | Mo Willems Art Adventure: "Drawing, Design, and Storytelling"
- October 9 | Dinosaurs and Fossil Discovery
- October 23 | Ancient Cultures and World Civilizations
- November 6 | Earth Science: Rocks, Minerals, and the Changing Earth
- November 20 | Pennsylvania: Art, Culture, and Legacy
- December 4 | Space Science: Our Solar System and Beyond

Pricing:

Class	Museum Member	Non-Member	RSD Families
Single Class for one Adult and one Child	\$20	\$30	\$20
Additional Guest	\$8	\$14	\$8

Reservations required. Deadline to reserve is the Monday prior to each program. Includes Museum Admission for day of program. Library Passes and other promotions not valid for this program.

Email becky.ruth@readingpublicmuseum.org.



Senior Series | 1-2pm

You are never too old to learn! Come to The Museum for this senior-friendly program. The program runs on the 4th Friday of the month unless otherwise noted. All documentaries will be shown in The Neag Planetarium. Guests of all ages welcome.

Upcoming dates:

- September 26
- October 24
- November 21
- December 19

Pricing:

Free for Members, Free with Museum Admission



Meet The Museum Night for Educators

September 30 | 3-6pm

Discover, connect, and unwind at our exclusive Meet The Museum Night for Educators! Join fellow teachers for a special after-hours evening where you'll explore our newest exhibits at your own pace, discovering interactive displays and fresh educational content perfect for students of all ages. Enjoy guided tours, hands-on demonstrations, and chat with Museum staff about how to design a memorable, curriculum-enhancing field trip tailored to your classroom's needs. Browse our educator resources and opportunities while sampling complimentary refreshments in a relaxed, social setting. RSVP today and let us help make your next field trip extraordinary!

Pricing:

Free with School Faculty ID, 1 guest free with each faculty member
Reservations requested. Email wendy.koller@readingpublicmuseum.org.

Yoga Under the Stars | 5:30-6:30pm

Led by a certified instructor, these yoga sessions in The Neag Planetarium provide gentle yoga relaxation under the stars.

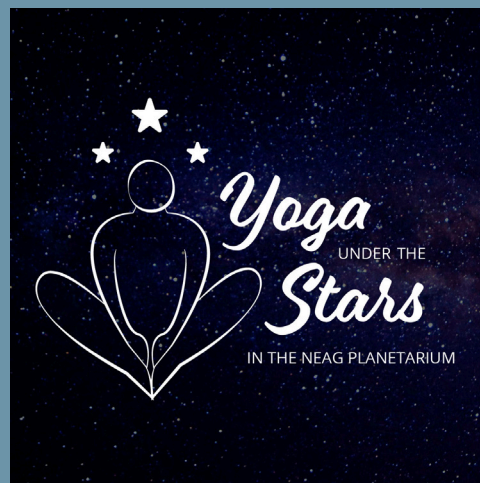
Upcoming dates:

- September 30 to November 4 | Series
- December 2 to January 6 | Series

Pricing:

Series/Class	Museum Member	Non-Member
Single Series	\$45	\$65
2 series	\$80	\$125
Per Class	\$10	\$15

Reservations required. Email wendy.koller@readingpublicmuseum.org.



The Museum After Dark | 6-10pm

Enjoy a relaxed and engaging evening at our Museum After Dark program. Unwind with tasty food and drink options as you explore our galleries at your own pace, without the usual daytime crowds. Take part in hands-on activities designed for adults, special programs and lectures, enjoy great conversation, and soak in the creative atmosphere—all in a welcoming and laid-back setting. Join us for a friendly night of discovery and fun! This event is for people age 21+ only. For details about each night's special activities, visit our website!

Upcoming dates:

- October 16 | Spooky Night Out
- December 18 | Holiday Night Out

Pricing:

	Student w/ID (age 21 and up)	Adult
Pre-Register	\$20	\$25
At the Door	\$25	\$30

Pre-registration suggested for discount! Reserve your space online!



Sensory Inclusive Hours

The Reading Public Museum strives to be a place of lifelong learning and enjoyment for guests of all ages and abilities. As a result, we will be hosting special sensory inclusive hours for guests and their caretakers who require a quieter atmosphere to explore The Museum. Guests who pre-register will receive a pre-visit packet with information to share with their dependents.

Upcoming dates:

- October 19 | 10-11am
- October 20 | 5-6pm
- November 24 | 5-6pm
- November 28 | 10-11am
- December 7 | 10-11am
- December 8 | 5-6pm
- December 30 | 10-11am

Email becky.ruth@readingpublicmuseum.org to sign up.

Did you know The Reading Public Museum is a Certified Autism Center? Ask at admissions if you need a sensory bag or a sensory map to help make your visit the best it can be! If there is an accommodation you need but don't see, just ask!

The Museum's sensory accommodations are made possible with the support of: Kimberly Alarcon; Anonymous Donor; Hope Behavioral Health; Threshold Rehabilitation Services, Inc.; and The Victory Bank Foundation.

Arboretum Education | 10-11am

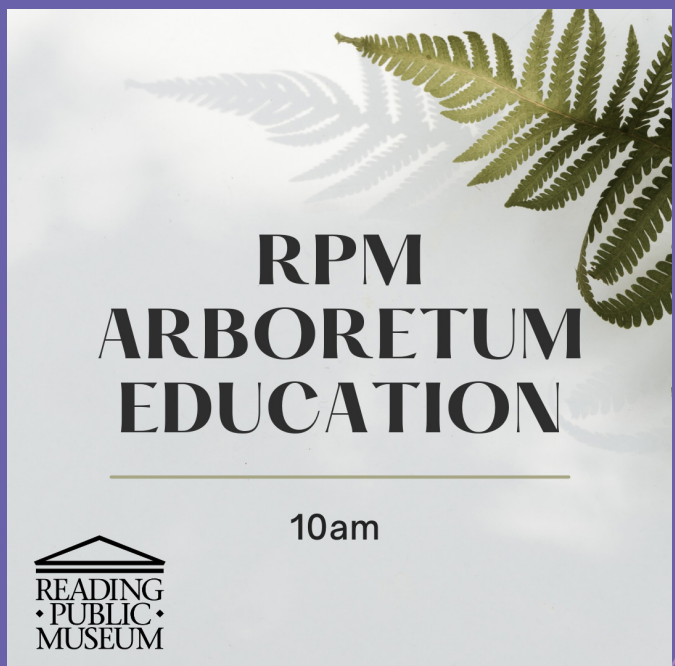
Join us for a variety of learning opportunities presented by Master Gardeners, avid horticulturists, and other industry specialists.

Upcoming dates:

- October 21 | French Creek presented by Jared Brandt, French Creek State Park Naturalist
- November 18 | Badlands Parks presented by Park Ranger Heather Barrett, Park Ranger at Bad Lands National Park
- December 16 | Topic TBD presented by David Kline, Professional Story Teller

Pricing:

Free for Members, Free with Museum Admission



Art History Short Course | 1:30-3pm

Inspired in part, by *Dressing the Abbey*, this engaging four-week art history course, taught jointly by Scott Schweigert, Curator of Art and Civilization, and Geoff Fleming, Executive Director and CEO, offers an in-depth exploration of the tradition of the Country Home in both America and Great Britain. The sessions explore the country house as a site of art, power, and cultural imagination, tracing its evolution from aristocratic seat to symbol of wealth and to modern myth. Through case studies in Britain, Ireland, and the United States—and even its reinvention and romanticization on screen—the series will examine how these lavish houses functioned as both private residences and public statements, and how their collections and architectural legacies continue to shape our understanding of art and history.



Upcoming dates:

- October 21: Power, Patronage, and Display:
The Country House at Chatsworth, Burghley and Houghton Hall
- October 28: A Legacy Denied: Lost Country Houses of Ireland
- November 4: Art and Opulence: Gilded Age Mansions and the Rise of Patronage
- November 11: The Country House in Film & Television

Pricing:

Class/Course	Museum Member	Non-Member
Single Class	\$45	\$55
Whole 4 week course	\$125	\$185

Reservations required. Email wendy.koller@readingpublicmuseum.org.

Trick or Treat at The Museum

October 25 | 9-11am

Join Museum Educators and community partners as we celebrate the Halloween season with a safe trick or treating event at The Museum. Children will receive Halloween and Fall themed crafts to take home in addition to coupons and snacks provided by our sponsors as they travel to the various treat stations throughout our galleries.

Pricing:

	Museum Member	Non-Member	RSD Families
Child	\$5	Museum Admission	\$5
Adult	Free	Museum Admission	Free

Reservations required. Register online.



Scout Quest Days at The Museum

Join us for Scout Quest Days, fun and engaging programs and adventures designed especially for Cub Scouts and Girl Scouts to earn badges through exciting hands-on activities and skill-building challenges. Scouts will have the opportunity to complete requirements in areas like nature, creativity, STEM, and art while exploring interactive stations led by experienced educators. Whether you're conquering new adventures or brushing up on favorite skills, Scout Quest Days offer a perfect blend of learning and fun that inspires scouts to earn badges, go on adventures, and celebrate their achievements together!



Upcoming dates:

- November 8 | 9am-12pm - GSEP: Craft and Tinker Through time***
- November 15 | 9am-4pm - Cacoosing Cub Scout Day: Themes TBD**
- November 22 | 9am-12pm - GSUA: Don't Let the Scout Illustrate!*
- December 14 | 9am-12pm - GSUA: Juliette's Way: An Etiquette Adventure*

Reservations required.

*Register online at www.readingpublicmuseum.org or by emailing Rebeka.birch@readingpublicmuseum.org

**Register through your Pack or Den

***Register through GSEP Website

Celebrate Our Community! | 1-4pm

November 9 | Indigenous American Heritage Celebration

Experience the vibrant diversity of our region with The Museum's new program, Celebrating Our Community! This special event shines a spotlight on local community members from a variety of ethnic backgrounds as they share the rich traditions, stories, music, art, and cuisine unique to their cultures. Visitors of all ages are invited to enjoy live cultural performances, interactive workshops, traditional dances, hands-on art activities, and food tasting stations—all led by neighbors eager to connect and celebrate. Whether you're crafting, listening, dancing, or tasting, you'll discover new perspectives and make lasting memories. Celebrating Our Community is a joyful, interactive day designed to build understanding, spark friendships, and honor the vibrant mosaic that makes our community unique. Everyone is welcome—come join the celebration!



Pricing:

Free Museum Admission between 1-4pm on Celebrate Our Community days

If you are a member of a group or organization who would like to participate in sharing your culture with the community please contact Becky at becky.ruth@readingpublicmuseum.org



Documentary Screening

November 10 | 2pm

Join us for a powerful and important special screening of the documentary *Amá*, presented in collaboration with the Widoktadwen Center for Native Knowledge. This deeply moving film, the result of nine years of careful and sensitive work by filmmaker Lorna Tucker, reveals the untold story of the forced sterilization and systemic abuses committed against Native American women by the U.S. government during the 1960s and 70s. Featuring personal testimonies from Native women who bravely

share their experiences, the documentary addresses very sensitive and difficult content, including themes of involuntary medical procedures, loss, and resilience.

This event offers a unique opportunity to learn about a painful chapter in history that is rarely discussed but essential to understanding the impacts of colonialism and government policies on Native communities. We encourage attendees to approach the screening with respect and reflection, and please be aware that some material may be emotionally challenging.

This meaningful program is part of RPM's commitment to amplifying Indigenous voices and fostering awareness about cultural and historical truths. We welcome you to join us for this important experience.

Pricing:

Free with Museum Admission

STEM Sunday: Friends of a Feather

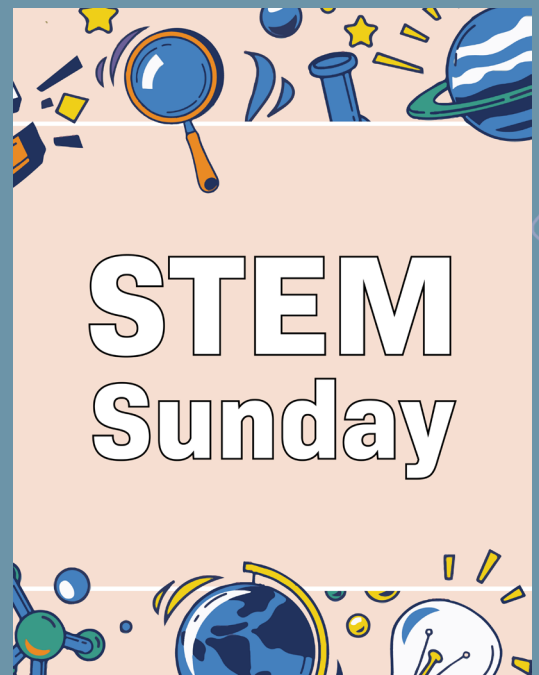
November 23 | 1-4pm

Enjoy a crisp and colorful Fall afternoon at our Friends of a Feather: STEM Sunday. Step inside to explore & make feather-themed art, take part in hands-on science experiments, learn about flight, and meet some of our avian friends. Enjoy seasonal beverages, and food trucks.

Pricing:

	Museum Member	Non-Member	RSD Families
Child	\$5	Museum Admission	\$5
Adult	Free	Museum Admission	Free

Reservations required. Reserve your tickets online.



Pictures with Santa

December 6 | 9am-1pm

Celebrate the magic of the season with Museum Educators and community partners as we honor Christmas and diverse winter cultural traditions! Families can enjoy special visits and photo opportunities with Santa and Mrs. Claus, while children create festive crafts to take home. As guests explore The Museum and wait in line, they'll receive delicious snacks and coupons kindly provided by our sponsors. Plus, hear from community groups showcasing our "Yuletide Around the World" holiday displays, sharing unique holiday customs from cultures near and far. Join us for a joyful celebration that brings the spirit of the season alive for all ages!

Pricing:

	Museum Member	Non-Member	RSD Families
Adult	\$15	\$25	\$15
1 Adult and 1 Child	\$25	\$35	\$25
Family of 3	\$35	\$45	\$35

Reservations required. Register online.

Noon Year's Eve

December 31 | 10am-12pm

Ring in the New Year with a blast of fun at The Museum! Join our Museum Educators and community friends for a festive celebration where families can make colorful party hats, funky noisemakers, and all the cheerful props you need to welcome the New Year with a smile. Kids won't stop moving as they dance, groove, and get energized leading up to our spectacular balloon drop at noon inside the magical Neag Planetarium. Get ready for laughter, music, and memories — this countdown party is one you won't want to miss!

Pricing:

	Museum Member	Non-Member	RSD Families
Child	\$5	\$5 + Museum Admission	\$5
Adult	Free	Museum Admission	Free

Reservations required. Register online.



If you or someone you know is interested in sponsoring any of these educational programs or events, please contact Ashley at ashley.houston@readingpublicmuseum.org.

Dinner Series

Get lost in art and explore cultures from around the world, all while enjoying a fine dining experience! The Dinner Series at the Reading Public Museum, presented by The Stevens & Lee Companies, is an alluring trio of sophisticated in-gallery dinners (held annually in October, February, and June) that stir the senses by pairing the culinary talents of some of the area's best chefs, restaurants, and catering experts with artworks and objects from The Museum's collections and special exhibitions. Each dinner is accompanied by a cocktail hour, curator-led tour, and custom wine pairings chosen by a Reading-based sommelier. Attendees may choose to attend a single date in the series, or all three. Reserve your seat by contacting Hannah at hannah.alarcon@readingpublicmuseum.org.

The 2025-26 series promises an exciting variety, inspired by The Museum's diverse exhibition offerings, as follows:

- Thursday, October 23, 2025 | 5:30pm-9pm
Featuring — Dressing the Abbey
- Thursday, February 26, 2026 | 5:30pm-9pm
Featuring — Re-Discovering Native America: Stories in Motion with The Red Road Project
- Thursday, June 25, 2026 | 5:30pm-9pm
Featuring — Shaun the Sheep™: Flock this Way

Sponsored by:

The Stevens & Lee Companies

Powerful partnerships. Standout solutions.



PURCHASE PARTY AT THE MUSEUM

Purchase Party

November 13 | 5:30-8pm

Mark your calendar for the 11th Annual Purchase Party at the Reading Public Museum.

The Museum's permanent collection of paintings, sculptures, cultural and scientific materials, and more, was started in 1904 and has been growing ever since. The Purchase Party brings

together art and history-loving community members to vote on the next artwork to be added to the collection, offering a unique opportunity to directly affect what is displayed on the gallery walls and preserved for our community to enjoy for generations to come.

This year's Purchase Party theme, *Pennsylvania Artists: Collecting the Commonwealth*, will celebrate the talent and tradition of Pennsylvania artists, from past masters to today's most compelling creators. Candidates for acquisition will be brought to RPM and displayed for the evening. Guests will enjoy fine wines from a private cellar, catered hors d'oeuvres, live harp music, and lively presentations from advocates for each artwork before casting their votes. At the end of the evening, the winner will be announced, purchased, and make its first exhibition appearance in the galleries soon after. Join us to cast your vote! Tickets are available on our website at www.readingpublicmuseum.org/purchase-party.

New Year's Eve Under the Stars at the Neag Planetarium

December 31, 2025

Ring in 2026 like never before at the Reading Public Museum's Neag Planetarium with New Year's Eve Under the Stars—an extraordinary new event that will launch your year in the most spectacular way. Step into a truly breathtaking setting beneath the dazzling dome, where the stars come alive and the atmosphere pulses with celebration. Enjoy open bars, indulge in bites from a variety of food stations, and explore activity areas designed to delight and surprise. As the night builds to midnight, dance beneath the cosmos and countdown to the New Year in a venue unlike any other. This celestial celebration will be the talk of the town, and you won't want to miss your chance to be part of it. Tickets go on sale soon—keep an eye on your inbox and the RPM website for details!



RPM's 12th Annual Dogs & Brews was a Tail-Wagging Success!

On May 25th, RPM proudly hosted its **12th Annual Dogs & Brews** fundraising event, and what a day it was! Participants, vendors, sponsors, and RPM staff came together for a fun-filled celebration. Beer and wine were tasted, dogs were pampered and petted, games were played, and memories were made.

This event plays a crucial role in supporting RPM's mission and our ongoing efforts to make a positive impact on the community, also partnering with and benefiting the

Animal Rescue League of Berks County. We are deeply grateful for their dedication to animal welfare and their involvement in this year's festivities.

Dogs & Brews would not have been possible without the generous support of our phenomenal event sponsors: Breidegam Family Foundation, Brentwood Industries, Dogtopia of Sinking Spring, EnerSys, Lindsey Hart Photography, PIVOT/Athletico, Ridewood Canine Camp, Tompkins, VCA Sinking Spring, and West Lawn Quilting Association.

Save the date for next year's Dogs & Brews on **Sunday, May 24, 2026!**

New Membership System

Behind the scenes, The Museum is updating its Membership system! This Fall, we will be debuting a new interface that will allow members to access their membership online. You will be able to renew memberships, set them for annual auto-renew, check which events you've registered for, make additional contributions, and more! We will also transition slowly to reusable plastic membership cards, which will be *your card* for years to come. No more annual card mailing and cards being lost in the post!

The transition to the new system will take some time. For now, please continue to use your existing card to receive all of your membership benefits, and renew as normal if your renewal time approaches. **Keep an eye out for an email this fall with further instructions.** Those without an email on file will receive a mailed letter.

Exciting changes are coming, so that you can make the most of your RPM Membership!

Letter from the Director

Well, it has been one of our busiest summers in years with the popularity of the incredibly fun and entirely interactive exhibition, *TOYTOPIA*. I hope everyone has visited the show at least once, if not more often, to enjoy playing with LEGO®, Lincoln Logs®, console arcade games, or the oversized Battleship® board game – my personal favorite.

Now we are getting closer and closer to Autumn, and with that, a change of many of our exhibitions. *TOYTOPIA* will depart to be replaced by *Dressing The Abbey* – an exhibition focused on the costumes featured in the hit television and film series, *Downton Abbey*™. The elegant costumes will be paired with incredible objects and paintings from our permanent collection, creating the perfect atmosphere to enjoy the stories they tell. As always, the exhibition will open on the same day as our big Fall fundraiser, Night at The Museum. We look forward to seeing you all at that festive event.

Soon to open at The Museum, *The Pigeon Comes to Reading!: The Mo Willems Exhibit*, is an exhibition centered around the groundbreaking work of the American writer, animator, voice actor, children's book author, and illustrator, Mo Willems. This will be a fun one both for children as well as the young adults who themselves were raised with Mo Willems' work in their homes.

Our final new exhibition of the season is the *112th Annual Exhibition: Allied Artists of America*, which is being hosted by RPM for the first time. Founded in 1914 in New York City, Allied Artists of America is one of the oldest artists' organizations in the nation. Created to support "the advancement of American art by opening new avenues of opportunity for the exhibition of meritorious works of art," notable members included Charles Avery Aiken, Fredrick K. Detwiller, Walter Farndon, Frank Gervasi, Edmund W. Greacen, Dewitt McClellan Lockman, Pietro Montana, Ogden M. Pleissner, and Theodore "Ted" Kautzky. This show will feature some of the best works by contemporary artists including examples in oil painting, sculpture, graphics, mix media, watercolor, and pastels.

As the end of the year begins to get closer, please consider RPM in your end-of-year gift planning; the stronger we make the Foundation and The Museum, the more we will be able to do for our community.

See you soon on Museum Road!

Geoffrey K. Fleming



Geoffrey K. Fleming

IN THE NEAG PLANETARIUM

SEPTEMBER

Sunday Shows

1pm - *One World One Sky: Big Bird's Adventure*
2pm - *Dream to Fly*
3pm - *Big Astronomy*
4pm - *One Sky Project*

Weekday Shows

2pm - *Dream to Fly*
3pm - *Big Astronomy*
4pm - *One Sky Project*

Floyd Final Friday: 9/26

7pm - *Pink Floyd: Wish You Were Here*
8pm - *Pink Floyd: Dark Side of the Moon*
9pm - *Pink Floyd: The Wall*

OCTOBER-NOVEMBER

Sunday Shows

1pm - *Audio Tour of the Solar System*
2pm - *Dream to Fly*
3pm - *Big Astronomy*
4pm - *One Sky Project*

Weekday Shows

2pm - *Dream to Fly*
3pm - *Big Astronomy*
4pm - *One Sky Project*
10/31 | 5,7, and 9pm - *Rocky Horror Picture Show*

Floyd Final Friday: 11/28

7pm - *Pink Floyd: Wish You Were Here*
8pm - *Pink Floyd: Dark Side of the Moon*
9pm - *Pink Floyd: The Wall*

DECEMBER

Sunday Shows

1pm - *Let it Snow*
2pm - *Season of Light*
3pm - *Big Astronomy*
4pm - *One Sky Project*

Weekday Shows

2pm - *Season of Light*
3pm - *Big Astronomy*
4pm - *One Sky Project*

Floyd Final Friday: 12/26

7pm - *Pink Floyd: Wish You Were Here*
8pm - *Pink Floyd: Dark Side of the Moon*
9pm - *Pink Floyd: The Wall*

The Reading Public Museum is a dynamic center of lifelong learning, that collects, preserves, and interprets objects of art, science, and civilization to engage, educate, and enlighten current and future generations from our diverse communities.

Join Your Museum Today!

The Reading Public Museum is dynamic and ever-changing, offering diverse exhibitions all year long! Temporary exhibitions featuring science and art combine with our permanent galleries to offer you an engaging experience every time you visit. As a Member, every visit to The Museum and Neag Planetarium is FREE! Plus, there are even more benefits.

Please visit readingpublicmuseum.org and click on "Join and Support" for complete details and to join securely online.

The Museum Shop

Looking for a unique gift? You'll find handmade gifts, toys and games for children, exquisite jewelry, and more. Our stock is always changing, so stop in often to see our new items! Open during regular Museum hours (no admission required). Members receive 10% off every day!

Book a Group Visit

We're thrilled to welcome eager and attentive learners from Pre-K to Seniors on a daily basis. Group rates apply to 10 or more people. For more information or to book a group, contact Wendy Koller at wendy.koller@readingpublicmuseum.org.

Book Your Event

The Museum is home to Berks County's most treasured and distinctive wedding and event venues. Among our Fine Art Galleries, Neag Planetarium, and Stone Terrace Tent, we have a venue to accommodate every size and budget. For more information, please contact Kara Seawell at kara.seawell@readingpublicmuseum.org.

Museum Address/Phone

500 Museum Rd., Reading, PA 19611
610.371.5850

Museum Hours

Daily: 11am to 5pm
For Holiday hours, please check our website.

Museum Admission

\$14 Adult (18-64); \$8 Seniors/Children/College Students (w/ID); \$6 Active Military (w/ID); Members and Children 3 and under are free.

Planetarium Shows

Sun 1, 2, 3, & 4pm plus Weekday Shows at 2, 3, & 4pm (Mon-Fri with some exceptions).

Star Show prices (for each show):

\$9 Adults (18-64); \$7 Seniors/Children/College Students (w/ID); \$6 Active Military (w/ID); Members and Children 3 and under are free. Buy tickets at the Museum admission desk.